

Antiepileptic drugs (AED) are used for the treatment of epilepsy, a chronic neurological disorder, which is characterised by recurrent epileptic seizures.

The ClinMass® Add-on Set for Antiepileptic Drugs (order no. MS9250) contains all analyte specific components required for the quantification of 27 different AEDs and metabolites.

The ClinMass® TDM Platform (order no. MS9050) contains the components needed for on-line SPE LC-MS/MS analysis. It can be used with all ClinMass® Add-on Sets of the "TDM Kit System, on-line" (BZP, TCA, ...). The analytical column is suitable for the whole analyte panel (103 compounds).

## TDM Kit System, on-line

# Antiepileptic Drugs in Serum / Plasma

### Test Data

Test data are available on request.

### LC-MS/MS Parameters

#### LC-Parameters

Pump 1 (SPE): gradient program  
(0.1 - 4 ml/min)

Pump 2 (Mobile Phase A, B):  
gradient program  
(0.6 ml/min)

Injection volume: 3 - 15 µl\*

Injection interval: 7.0 min

Column heater: 40 °C

\* depending on the sensitivity of the mass spectrometer

#### MS-Parameters

Ion source: ESI, positive / negative

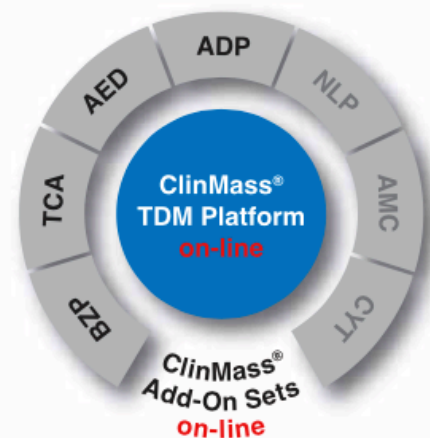
MS/MS mode: MRM

### Sample Preparation

No manual sample preparation needed!

Direct injection of sample and Internal Standard IS in the ratio 1:2 (autosampler).

**Fully automated  
on-line method!**

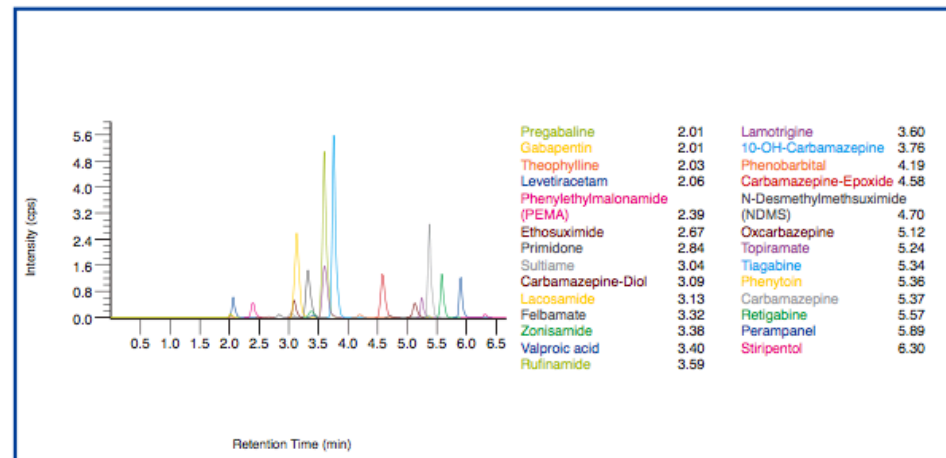


→ No manual sample preparation needed

→ Flexible and fast LC-MS/MS Analysis (7.0 min)

→ IS contains 18 isotope labeled analytes

Chromatogram of the ClinCal® Serum Calibrator, Level 2 (order no. MS9213)



### Ordering Information

Order No.	Description	Quantity
MS9050	ClinMass® TDM Platform, on-line for 400 assays	1 pce.
<b>Components (order no. MS9050):</b>		
MS9005	Autosampler Washing Solution	1000 ml
MS9007	Mobile Phase A	2 x MS9007 (2 x 1000 ml)
MS9008	Mobile Phase B	1000 ml
MS9059	SPE-Buffer Load L	2 x MS9059 (2 x 2500 ml)
MS9060	SPE-Buffer Wash W	2 x MS9060 (2 x 2500 ml)
MS9071	Reconstitution Solution R	5 ml
<b>Start Accessories:</b>		
MS9035	Analytical Column with test chromatogram	1 pce.
MS9031	SPE-Column	1 pce.
MS9032	Pre-filter	1 pce.
<b>Accessories:</b>		
MS9022	Diluting Solution D	50 ml
FK7400	Inline-Filter (stainless steel sieve, free of dead volume)	1 pce.
FK7340	Sealings and sieves	4 pcs. each
MS9250	ClinMass® Add-on Set, on-line, for Antiepileptic Drugs in Serum / Plasma for 400 assays	1 pce.
<b>Components (order no. MS9250):</b>		
MS9262	Internal Standard IS, lyophil.	5 ml
MS9213	Serum Calibrator Set, lyophil. (Level 0 - 3) Manual	4 x 1 x 1 ml 1 pce.
<b>Start Accessories:</b>		
MS9214	Optimisation Mix, lyophil.	5 x 2 ml
<b>ClinChek® Controls:</b>		
MS9282	Serum Control, lyophil., Level I, II	2 x 5 x 1 ml