

Tricyclic antidepressants (TCA) are a group of psychoactive drugs which are mainly used for the therapy of endogenous depressions, anxiety and pain management.

The ClinMass® Add-on Set for TCAs (order no. MS9150) contains all analyte specific components required for the quantification of 12 TCAs and two atypical neuroleptics.

The ClinMass® TDM Platform (order no. MS9050) contains the components needed for on-line SPE LC-MS/MS analysis. It can be used with all ClinMass® Add-on Sets of the "TDM Kit System, on-line" (BZP, TCA, ...). The analytical column is suitable for the whole analyte panel (103 compounds).

TDM Kit System, on-line

Tricyclic Antidepressants in Serum / Plasma

Test Data

Test data are available on request.

LC-MS/MS Parameters

LC-Parameters

Pump 1 (SPE): gradient program
(0.1 - 5 ml/min)

Pump 2 (Mobile Phase A, B):
gradient program
(0.8 ml/min)

Injection volume: 3 - 15 µl*

Injection interval: 3.8 min

Column heater: 40 °C

* depending on the sensitivity of the mass spectrometer

MS-Parameters

Ion source: ESI, positive

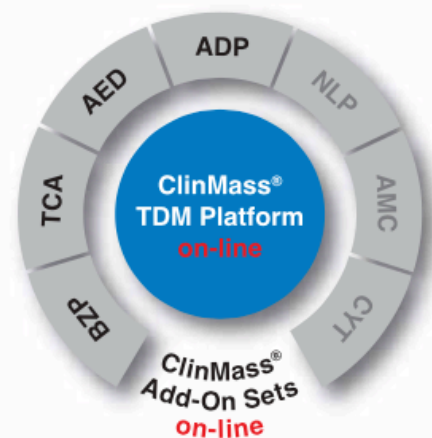
MS/MS mode: MRM

Sample Preparation

No manual sample preparation needed!

Direct injection of sample and Internal Standard IS in the ratio 1:2 (autosampler).

Fully automated on-line method!

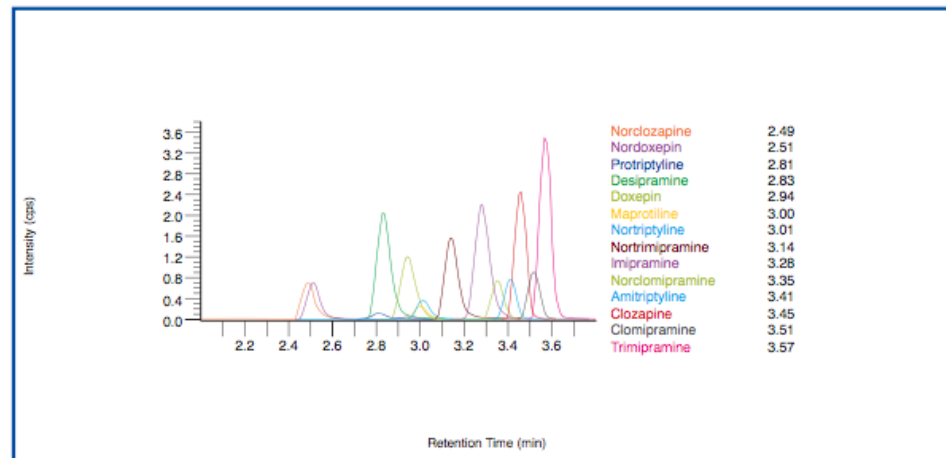


→ No manual sample preparation needed

→ Flexible and fast LC-MS/MS Analysis (3.8 min)

→ IS contains 12 isotope labeled analytes

Chromatogram of the ClinCal® Serum Calibrator, Level 2 (order no. MS9113)



Ordering Information

Order No.	Description	Quantity
MS9050	ClinMass® TDM Platform, on-line for 400 assays	1 pce.
Components (order no. MS9050):		
MS9005	Autosampler Washing Solution	1000 ml
MS9007	Mobile Phase A	2 x MS9007 (2 x 1000 ml)
MS9008	Mobile Phase B	1000 ml
MS9059	SPE-Buffer Load L	2 x MS9059 (2 x 2500 ml)
MS9060	SPE-Buffer Wash W	2 x MS9060 (2 x 2500 ml)
MS9071	Reconstitution Solution R	5 ml
Start Accessories:		
MS9035	Analytical Column with test chromatogram	1 pce.
MS9031	SPE-Column	1 pce.
MS9032	Prefilter	1 pce.
Accessories:		
MS9022	Diluting Solution D	50 ml
FK7400	Inline-Filter (stainless steel sieve, free of dead volume)	1 pce.
FK7340	Sealings and sieves	4 pcs. each
MS9150	ClinMass® Add-on Set, on-line, for Tricyclic Antidepressants in Serum / Plasma for 400 assays	1 pce.
Components (order no. MS9150):		
MS9162	Internal Standard IS, lyophil.	5 ml
MS9113	Serum Calibrator Set, lyophil. (Level 0 - 3)	4 x 1 x 1 ml
	Manual	1 pce.
Start Accessories:		
MS9114	Optimisation Mix, lyophil.	2 x 2 ml
ClinChek® Controls:		
MS9182	Serum Control, lyophil., Level I, II	2 x 5 x 1 ml