

In addition to the classical TCAs (see pages 136 - 137) a variety of newer antidepressants (ADP) is available for the treatment of depressions, such as selective serotonin and norepinephrine reuptake inhibitors (SSRIs, SNRIs, NRIs) and TeCAs.

The ClinMass® Add-on Set for Antidepressants (order no. MS9400) contains all analyte specific components required for the quantification of 27 different ADPs and metabolites.

The ClinMass® TDM Platform (order no. MS9000) contains the components needed for sample preparation and LC-MS/MS analysis. It can be used with all ClinMass® Add-on Sets of the TDM Kit System (BZP, TCA, ...). The analytical column is suitable for the whole analyte panel (102 compounds).

TDM Kit System

Antidepressants in Serum / Plasma

Test Data

Test data are available on request.

LC-MS/MS Parameters

LC-Parameters

Binary Gradient

Pump: Mobile Phases A/B
(0.7 ml/min)

Injection volume: 1 - 10 µl*

Injection interval: 3.5 min

Column heater: 40 °C

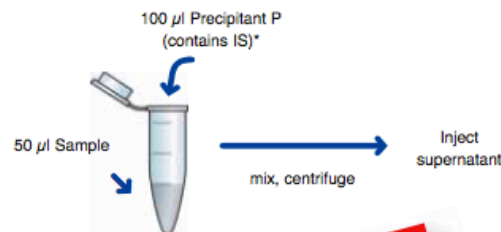
* depending on the sensitivity of the mass spectrometer

MS-Parameters

Ion source: ESI, positive

MS/MS mode: MRM

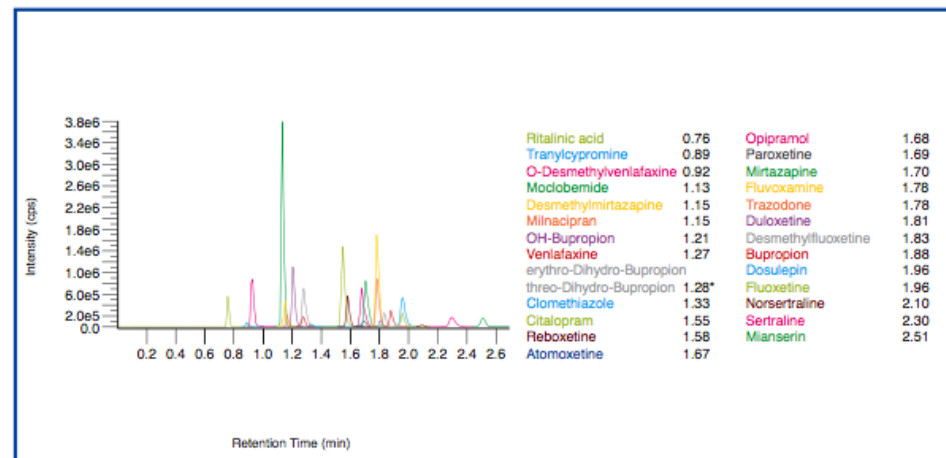
Sample Preparation



One step sample preparation!

* Reconstitution of IS (order no. MS9412) with 5 ml Precipitant P (order no. MS9021)

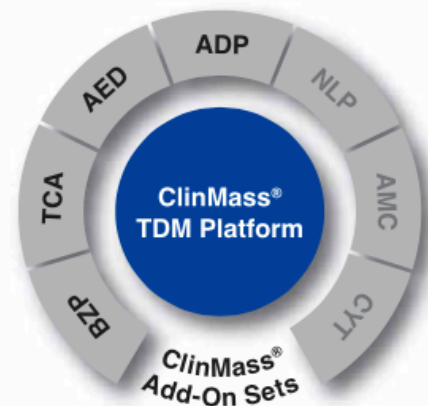
Chromatogram of the ClinCal® Serum Calibrator, Level 2 (order no. MS9413)



*erythro- and threo-Dihydro-Bupropion can be separated by a modified gradient in an extra run

Ordering Information

Order No.	Description	Quantity
MS9000	ClinMass® TDM Platform for 400 assays	1 pce.
Components (order no. MS9000):		
MS9005	Autosampler Washing Solution	1000 ml
MS9007	Mobile Phase A	2 x MS9007 (2 x 1000 ml)
MS9008	Mobile Phase B	1000 ml
MS9020	Sample Preparation Vials	4 x MS9020 (4 x 100 pcs.)
MS9021	Precipitant P	2 x MS9021 (2 x 25 ml)
Start Accessories:		
MS9030	Analytical Column with test chromatogram	1 pce.
MS9032	Prefilter	1 pce.
Accessories:		
MS9022	Diluting Solution D	50 ml
MS9400	ClinMass® Add-on Set for Antidepressants in Serum / Plasma for 200 assays	1 pce.
Components (order no. MS9400):		
MS9412	Internal Standard IS, lyophil.	5 x 5 ml
MS9413	Serum Calibrator Set, lyophil. (Level 0 - 3)	4 x 1 x 1 ml
	Manual	1 pce.
Start Accessories:		
MS9414	Optimisation Mix, lyophil.	2 x 2 ml
ClinChek® Controls:		
MS9482	Serum Control, lyophil., Level I, II	2 x 5 x 1 ml



→ Simple and time saving sample preparation

→ Flexible and fast LC-MS/MS Analysis (3.5 min)

→ IS contains 20 isotope labeled analytes