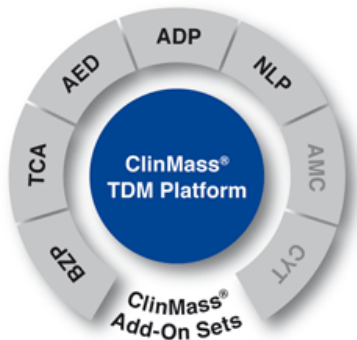


# ClinMass® TDM Kit System

## Neuroleptics in Serum / Plasma (MS9300)

### TDM Kit System, on-line



The ClinMass® TDM Kit System is based on a universal TDM Platform, that can be used for several different TDM analytes. Select your analyte panel by choosing the suitable ClinMass® Add-on Sets. Currently available are:

- Add-on Set for 28 Neuroleptics (NLP, MS9300)
- Add-on Set for 35 Benzodiazepines (BZP, MS9500)
- Add-on Set for 15 Tricyclic Antidepressants (TCA, MS9100)
- Add-on Set for 26 Antiepileptic Drugs (AED, MS9200)
- Add-on Set for 27 Antidepressants (ADP, MS9400)

*In preparation:*

Add-on Sets for Antimycotics (AMC) and Cytostatics (CYT)

*The benefits:*

The whole analyte panel is determined on one TDM Platform (i.e. identical sample preparation and mobile phases) and on one analytical column.

### Neuroleptics in Serum / Plasma

Neuroleptics belong to the class of psychoactive drugs and are administered in the therapy of psychoses, in particular the symptomatic treatment of schizophrenia. The long-term administration of neuroleptics gradually reduces schizophrenic reactions and as a consequence the patient's level of suffering is decreased. For treatment with neuroleptics therapeutic drug monitoring (TDM) is recommended in order to find the optimal drug level for the patient and thus to ensure the best psychoactive drug therapy for the patient with the lowest possible amount of side effects.

The ClinMass® Add-On Set for Neuroleptics (MS9300) contains the analyte-specific components for the determination of 28 different neuroleptics. The analysis is performed by HPLC with tandem mass spectrometry (LC-MS/MS).

The ClinMass® TDM-Platform (MS9000) contains the basic compounds required for LC-MS/MS analysis. It can be used with all ClinMass® Add-On Sets of the TDM Kit System. For all TDM analytes just one analytical column is required.

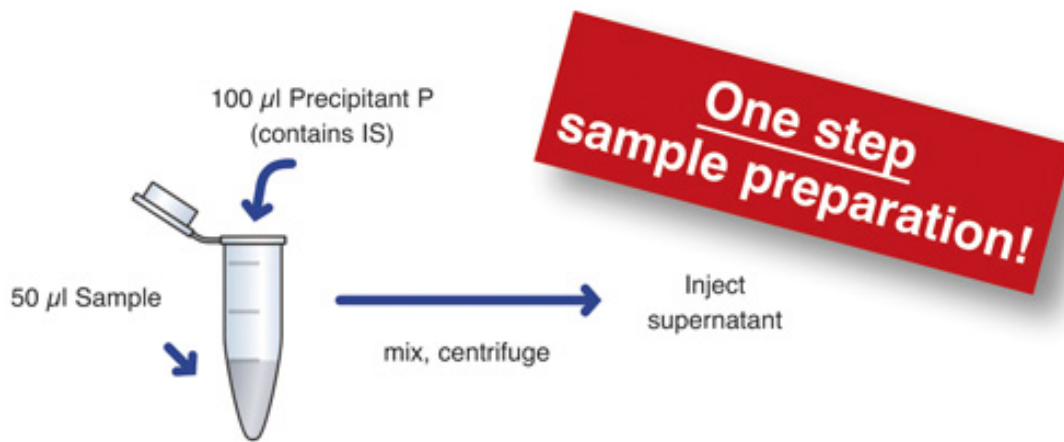
**Simple and time saving  
sample preparation**

**Flexible and fast LC-  
MS/MS Analysis (5.5 min)**

**Comprehensive analyte  
spectrum**

**IS contains 25 isotope  
labeled analytes**

## Sample Preparation



## LC-MS/MS Parameters

### LC-Parameters

Binary HPLC pump: Mobile Phases A / B  
(0.65 ml/min)

Injection volume: 1 - 10 µl

Injection interval: 5.5 min

Column heater: 40 °C

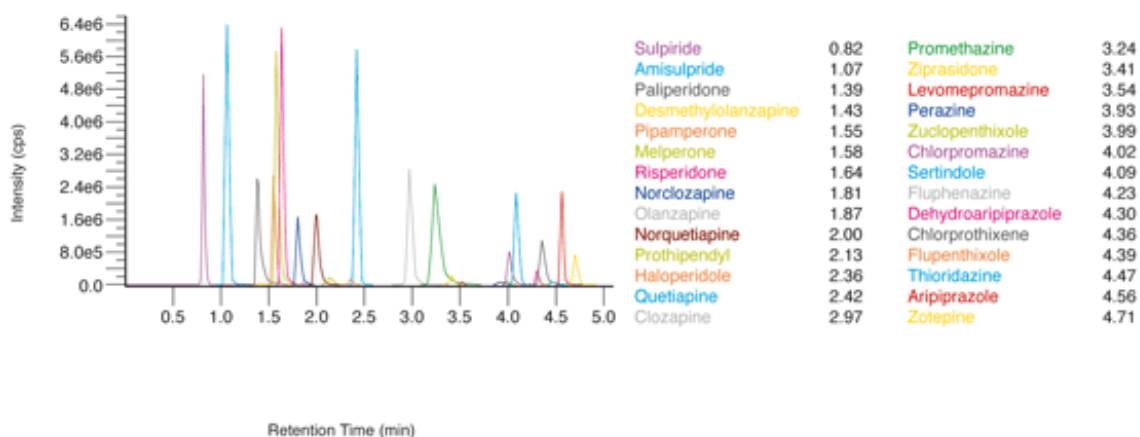
### MS-Parameters

Ion source: ESI

MS/MS-mode: MRM

## Chromatogram

Chromatogram of the ClinCal® Serum Calibrator (order no. MS9313), level 2:



## Ordering Information

<b>Order No.</b>	<b>Description</b>	<b>Quantity</b>
<b>MS9000</b>	ClinMass® TDM Platform for 400 assays	1 pce.
<b>Contents (order no. MS9000):</b>		
<b>MS9005</b>	Autosampler Washing Solution	1000 ml
<b>MS9007</b>	Mobile Phase A	2 x MS9007 (2x 1000 ml)
<b>MS9008</b>	Mobile Phase B	1000 ml
<b>MS9020</b>	Sample Preparation Vials	4 x MS9020 (4 x 100 pcs.)
<b>MS9021</b>	Precipitant P	2 x MS9021 (2 x 25 ml)
<b>Start Accessories:</b>		
<b>MS9030</b>	Analytical Column with test chromatogram	1 pce.
<b>MS9032</b>	Prefilter	1 pce.
<b>Accessories:</b>		
<b>MS9022</b>	Diluting Solution D	50 ml
<b>Order No.</b>	<b>Description</b>	<b>Quantity</b>
<b>MS9300</b>	ClinMass® Add-on Set for Neuroleptics in Serum / Plasma for 200 assays	1 pce.
<b>Contents (order no. MS9300):</b>		
<b>MS9312</b>	Internal Standard IS, lyophil.	5 x 5 ml
<b>MS9313</b>	Serum Calibrator Set, lyophil. (Level 0 - 3) Manual	4 x 1 x 1 ml
<b>Start Accessories:</b>		
<b>MS9314</b>	Optimisation Mix, lyophil.	2 x 2 ml
<b>ClinChek® Controls:</b>		
<b>MS9382</b>	Serum Control, lyophil., Level I, II	2 x 5 x 1 ml