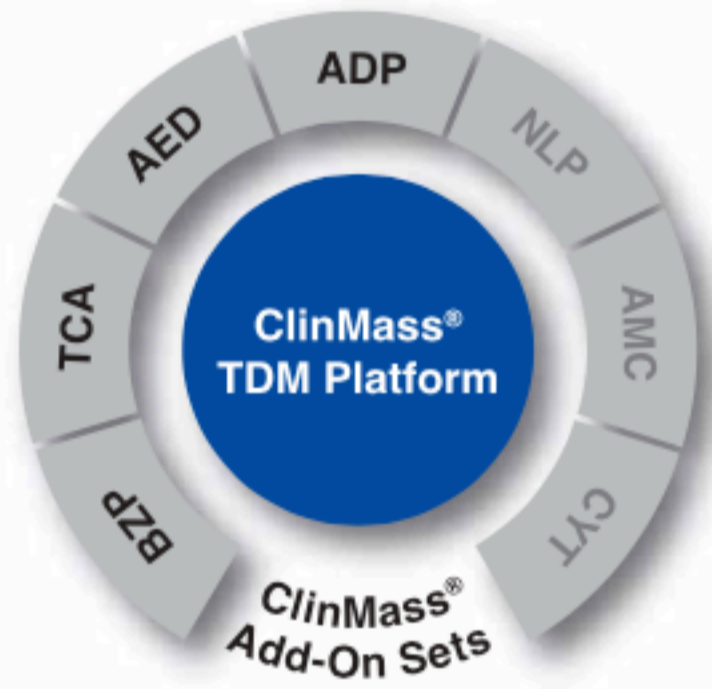


Tricyclic antidepressants (TCA) are a group of psychoactive drugs which are mainly used for the therapy of endogene depressions, anxiety and pain management.

The ClinMass® Add-on Set for TCAs (order no. MS9100) contains all analyte specific components required for the quantification of 12 TCAs and two atypical neuroleptics.

The ClinMass® TDM Platform (order no. MS9000) contains the components needed for sample preparation and LC-MS/MS analysis. It can be used with all ClinMass® Add-on Sets of the TDM Kit System (BZP, TCA, ...). The analytical column is suitable for the whole analyte panel (102 compounds).



→ Simple and time saving sample preparation

→ Flexible and fast LC-MS/MS Analysis (2.8 min)

→ IS contains 12 isotope labeled analytes

## TDM Kit System

# Tricyclic Antidepressants in Serum / Plasma

### Test Data

Test data are available on request.

### LC-MS/MS Parameters

#### LC-Parameters

Binary Gradient

Pump: Mobile Phases A/B  
(0.8 ml/min)

Injection volume: 1 - 10 µl\*

Injection interval: 2.8 min

Column heater: 40 °C

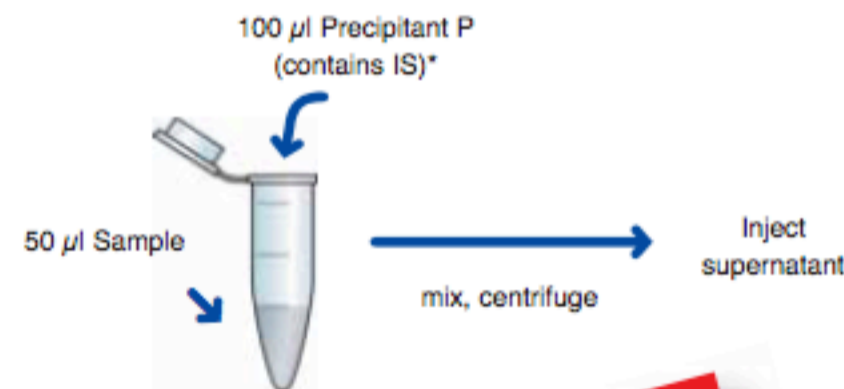
\* depending on the sensitivity of the mass spectrometer

#### MS-Parameters

Ion source: ESI, positive

MS/MS mode: MRM

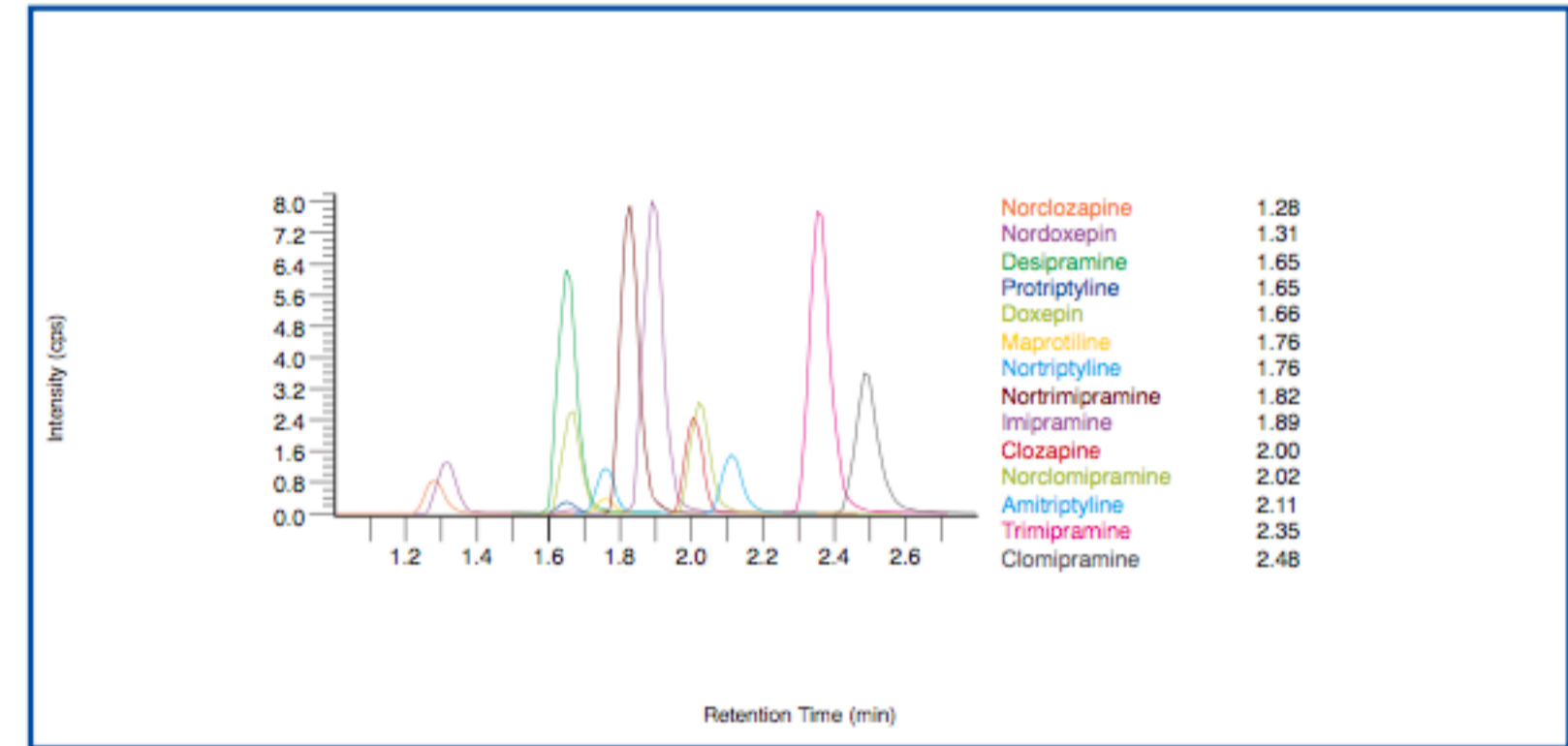
### Sample Preparation



**One step sample preparation!**

\* Reconstitution of IS (order no. MS9112) with 5 ml Precipitant P (order no. MS9021)

Chromatogram of the ClinCal® Serum Calibrator, Level 2 (order no. MS9113)



### Ordering Information

Order No.	Description	Quantity
MS9000	ClinMass® TDM Platform for 400 assays	1 pce.
<b>Components (order no. MS9000):</b>		
MS9005	Autosampler Washing Solution	1000 ml
MS9007	Mobile Phase A	2 x MS9007 (2 x 1000 ml)
MS9008	Mobile Phase B	1000 ml
MS9020	Sample Preparation Vials	4 x MS9020 (4 x 100 pcs.)
MS9021	Precipitant P	2 x MS9021 (2 x 25 ml)
<b>Start Accessories:</b>		
MS9030	Analytical Column with test chromatogram	1 pce.
MS9032	Prefilter	1 pce.
<b>Accessories:</b>		
MS9022	Diluting Solution D	50 ml
MS9100	ClinMass® Add-on Set for Tricyclic Antidepressants in Serum / Plasma for 200 assays	1 pce.
<b>Components (order no. MS9100):</b>		
MS9112	Internal Standard IS, lyophil.	5 x 5 ml
MS9113	Serum Calibrator Set, lyophil. (Level 0 - 3) Manual	4 x 1 x 1 ml 1 pce.
<b>Start Accessories:</b>		
MS9114	Optimisation Mix, lyophil.	2 x 2 ml
<b>ClinChek® Controls:</b>		
MS9182	Serum Control, lyophil., Level I, II	2 x 5 x 1 ml