

This ClinRep® Reagent Kit is intended for use with the TOX.I.S.™ System from Shimadzu, an on-line HPLC system, which has been designed for automated drug screening (on-line analysis). Shimadzu's analytical method provides automated determination of more than 500 different pharmaceuticals from urine. In case plasma shall be used for analysis an additional ClinRep® Reagent Kit (see pages 22 - 23) is available.

## Alcoholism, Drug Abuse

### Pharmaceuticals in Urine – On-Line Analysis

RECIPE and Shimadzu are offering a complete solution for the screening of illegal drugs.

The TOX.I.S.™ System from Shimadzu is an on-line HPLC-system with photodiode array detection. It has been designed for the qualitative (and semiquantitative) screening on acute poisoning, drug abuse and doping.

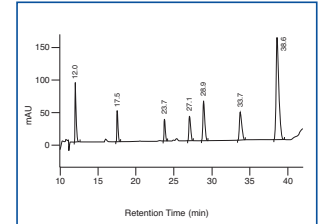
The RECIPE reagent kit ensures a reliable and standardised HPLC analysis with Shimadzu's TOX.I.S.™ System and contains buffers, an internal standard, a test solution, and an enzyme solution for sample pretreatment. Columns and accessories are also available.

Shimadzu's analytical method allows for an automated drug screening of more than 500 pharmaceutical compounds\* with sedative and hypnotic properties and high potential of abuse. The analyte identification bases on the comparison of retention times and UV spectra. For this purpose, the evaluation software of the system provides an extensive UV spectra library.

\* Compounds with acidic, neutral, and weak alkaline properties. For the screening of illegal alkaline drugs, such as morphine, methadone, and amphetamine, an additional reagent kit is offered (see pages 20 - 21).



Chromatogram of the ClinTest® Test Solution



Doxylamine: 12.0 min, Desmethylozapine: 17.5 min, Doxepine: 23.7 min, Carbamazepine: 27.1 min, Oxazepam: 28.9 min, Temazepam: 33.7, IS: 38.6 min

#### Ordering Information

Order No.	Description	Quantity
60100	ClinRep® Reagent Kit for the TOX.I.S.™ System from Shimadzu for 100 assays	1 pce.
<b>Kit Components (order no. 60100):</b>		
60007	Mobile Phase A	2500 ml
60008	Mobile Phase B	5000 ml
60109	SPE-Buffer	2500 ml
60112	IS Internal Standard	50 ml
60114	Test Solution	2 x 60114 (2 x 15 ml)
60021	SPE-Washing Solution	2500 ml
60122	Enzyme Solution	1 ml
<b>Start Accessories:</b>		
60130	Analytical Column with test chromatogram	1 pce.
60131	SPE-Column Holder incl. 1 SPE-Column	1 pce.
60132	SPE-Column	1 pce.
60133	Guard Column Holder incl. 1 Guard Column	1 pce.
60134	Guard Columns	10 pcs.

