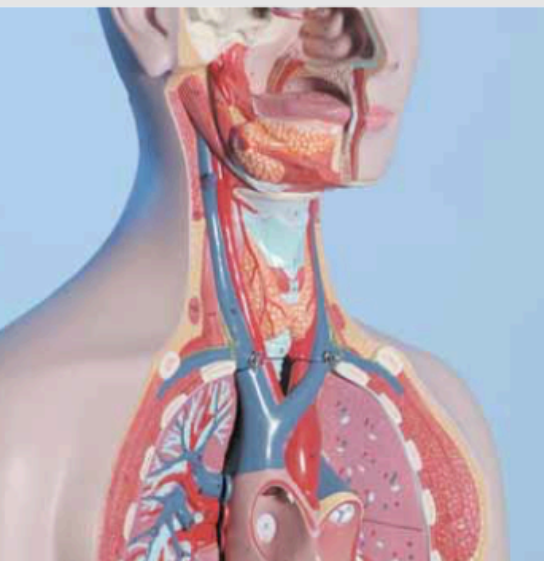


Serotonin is a neurotransmitter in the central nervous system. Serotonin deficiencies are connected with disorders such as depression, schizophrenia, and Parkinson's disease. Moreover, serotonin is produced in excess by carcinoid tumors. Here, the determination of serotonin, together with its metabolite 5-HIAA (see pages 34 - 35), is used to confirm or rule out the tumor. The RECIPE test kit allows for a quick and sensitive determination of serotonin from platelet-rich plasma, platelet-poor plasma, and serum. For the determination from urine an additional test kit is available (see pages 32 - 33).



Biogenic Amines

Serotonin in Plasma

Test Data

Linearity: 1 - 1000 $\mu\text{g/l}$
 Recovery: 80 - 90 %
 LOD: 0.5 $\mu\text{g/l}$
 LLOQ: 1 $\mu\text{g/l}$
 Intraassay precision: 3 %
 Interassay precision: 4 %

HPLC Parameters

Pump: isocratic pump,
 flow rate: 1.0 ml/min
 Injection volume: 20 μl
 Injection interval: 10 min
 EC-Detector: potential: 450 mV,
 sensitivity: 20 nA
 HPLC-Thermostat: 30 °C

Sample Preparation

Precipitation:

200 μl plasma	10 μl Internal Standard IS
--------------------------	---------------------------------------

1. add 200 μl Precipitant P ↓ 2. centrifuge

HPLC Analysis:

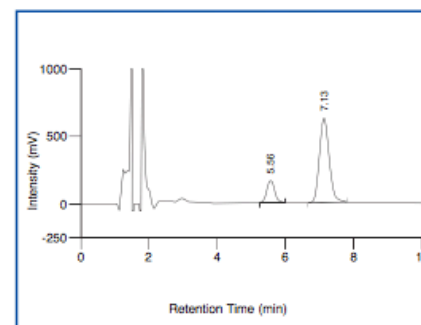
Inject 20 μl

→ Quick sample preparation

→ Injection interval: 10 min

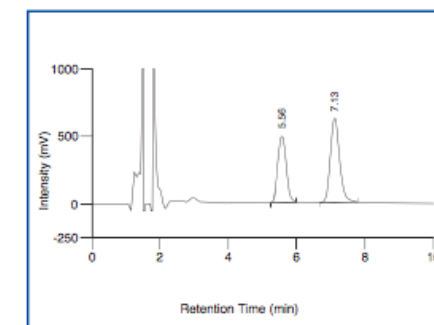
→ High analytical sensitivity

ClinChek® Plasma Control, Level I



Serotonin: 5.56 min, IS: 7.13 min

ClinChek® Plasma Control, Level II



Serotonin: 5.56 min, IS: 7.13 min

Ordering Information

Order No.	Description	Quantity
6000	ClinRep® Complete Kit for Serotonin in Plasma for 100 assays	1 pce.
Kit components (order no. 6000):		
6710	Mobile Phase	1000 ml
6711	Standard Solution, lyophil.	5 x 2 ml
6712	Internal Standard IS, lyophil.	5 x 1 ml
6013	Plasma Calibrator, lyophil.	5 ml
6020	Sample Preparation Vials	100 pcs.
6021	Precipitant P	22 ml
	Manual	1 pce.
	Quick Reference	1 pce.
Start Accessories:		
6030	Analytical Column with test chromatogram	1 pce.
ClinChek® Controls:		
8810	Plasma Control, lyophil., Level I	10 x 5 ml
8811	Plasma Control, lyophil., Level II	10 x 5 ml
8809	Plasma Control, lyophil., Level I, II	2 x 5 x 5 ml