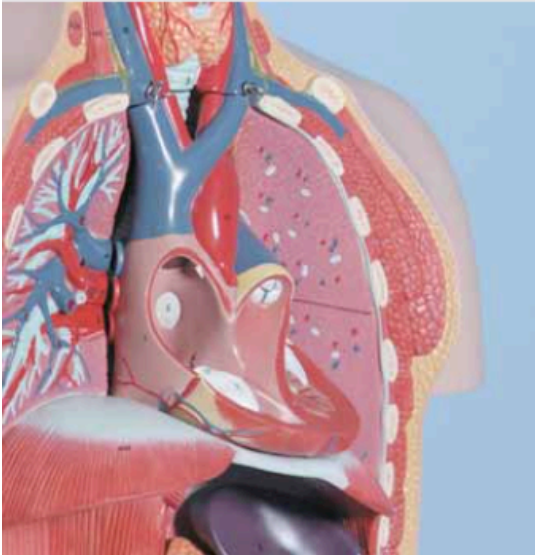


CDT (carbohydrate deficient transferrin) is the most specific parameter for chronic alcohol abuse. The ClinRep® HPLC Complete Kit for CDT provides a unique chromatographical resolution compared to other commercially available test kits. The analytical method correlates with the candidate reference method of the IFCC-CDT-WG* and ensures a reliable separation of all relevant transferrin isoforms (a-, mono-, di-,..., hexasialotransferrin). This applies in particular for disialotransferrin, the most important CDT isoform. Alternatively to this method with manual sample preparation, ClinRep® Complete Kits for on-line analysis and automated on-line analysis via 96-well plates are available (see pages 14 - 17).

* Working group of the IFCC for the international standardisation of CDT measurement.



→ Unique chromatographical resolution

→ Quantification of all relevant transferrin isoforms (incl. hexasialotransferrin)

→ Baseline-separation of disialotransferrin

Alcoholism, Drug Abuse

CDT in Serum

Test Data

LOD: 0.1 %*
 LLOQ: 0.3 %*
 Intraassay precision: 4.2 %
 Interassay precision: 4.3 %

* depending on the amount of total transferrin and on detector sensitivity

HPLC Parameters

Pump: ternary gradient pump,
 flow rates: 1.2, 2.0 ml/min
 Injection volume: 400 - 500 µl
 Injection interval: 20 min
 UV/VIS-Detector: 460 nm
 HPLC-Thermostat: 40 °C

Sample Preparation

Stabilisation/Precipitation:

150 µl serum	30 µl Stabilising Reagent S	10 µl mixture of Precipitants P1+P2
--------------	--------------------------------	--

1. incubate (30 min, 4 °C) ↓ 2. centrifuge

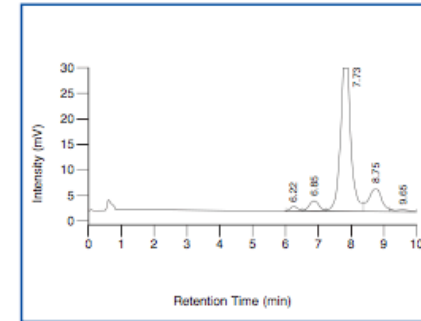
Dilution:

100 µl supernatant	1.0 ml Diluting Solution D
-----------------------	-------------------------------

HPLC Analysis:

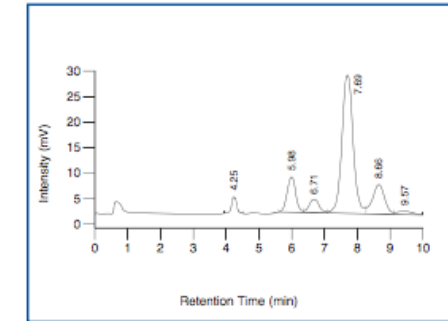
Inject 400 - 500 µl

Native sample, normal range



Disialotransferrin: 6.22 min, Trisialotransferrin: 6.85 min,
 Tetrasialotransferrin: 7.73 min, Pentasialotransferrin: 8.75 min,
 Hexasialotransferrin: 9.65 min

Native sample, pathological range



Asialotransferrin: 4.25 min, Disialotransferrin: 5.98 min,
 Trisialotransferrin: 6.71 min, Tetrasialotransferrin: 7.69 min,
 Pentasialotransferrin: 8.66 min, Hexasialotransferrin: 9.57 min

Ordering Information

Order No.	Description	Quantity
21000	ClinRep® Complete Kit for CDT in Serum for 100 assays	1 pce.
Kit Components (order no. 21000):		
21007	Mobile Phase A	3 x 21007 (3 x 2000 ml)
21008	Mobile Phase B	2000 ml
21009	Mobile Phase C	2000 ml
21020	Sample Preparation Vials	2 x 21020 (2 x 100 pcs.)
21021	Stabilising Reagent S	3 ml
21022	Precipitant P1	1 ml
21023	Precipitant P2	2 ml
21024	Diluting Solution D	100 ml
	Manual	1 pce.
	Quick Reference	1 pce.
Optional Components:		
21014	Test Solution	15 ml
Start Accessories:		
21030	Analytical Column with test chromatogram	1 pce.
21032	Cartridge incl. 1 precolumn	1 pce.
Refill Service:		
21031	Analytical Column with test chromatogram (original column needs to be returned)	1 pce.
Accessories:		
21033	Precolumns	5 pcs.
FK5810	PEEK tubing (connection of prefilter and column)	1 pce.
FW3000	Fixed-Wavelength-VIS-Detector (460 nm), complete	1 pce.
RC2002	Sodium-Hypochlorite-Solution (5 %)	12 ml
ClinChek® Controls:		
21080	Serum Control, lyophil., Level I	10 x 1 ml
21081	Serum Control, lyophil., Level II	10 x 1 ml
21082	Serum Control, lyophil., Level I, II	2 x 5 x 1 ml