

This ClinEasy® Complete Kit is designed for the photometric determination of the total porphyrins in the diagnosis of porphyrias. In contrast to the HPLC determination of the differentiated porphyrins (see pages 50 - 51), the total porphyrin concentration is quantified by a photometric measurement of the urine sample from a sample preparation column. The test is cost-efficient and can be performed quickly and easily. For diagnostic verification additional ClinEasy® Complete Kits for 5-aminolevulinic acid and porphobilinogen (see pages 108 - 109) as well as for porphobilinogen (see pages 110 - 111) are provided.



→ Cost-efficient screening

→ Easy handling

## Porphyrin, Lead Intoxication

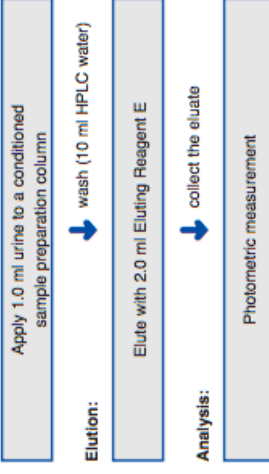
# Total Porphyrins in Urine

### Test Data

Linearity: 20 - 4000 µg/l  
 Recovery: ~ 70 %  
 LOD: 15 µg/l  
 LLOQ: 20 µg/l  
 Intraassay precision: 5.5 %  
 Interassay precision: 7.2 %

### Sample Preparation

Extraction:



### Ordering Information

Order No.	Description	Quantity
17100	ClinRep® Complete Kit for Porphyrins in Urine for 50 assays	1 pce.
<b>Kit Components (order no. 17100):</b>		
17120	Sample Preparation Columns	50 pcs.
17121	Eluting Reagent E	200 ml
	Manual	1 pce.
	Quick Reference	1 pce.
<b>Accessories:</b>		
FK4000	Column Rack (for 20 columns)	1 pce.
<b>ClinChek® Controls:</b>		
17280	Urine Control, lyophil., Level I	10 x 5 ml
17281	Urine Control, lyophil., Level II	10 x 5 ml
17282	Urine Control, lyophil., Level I, II	2 x 5 x 5 ml