

Lamotrigine and sulthiame are important antiepileptic drugs (AED) in the management of several types of epilepsy. This ClinRep® Complete Kit is especially designed for the determination of lamotrigine and sulthiame from plasma. It features a short time for analysis (7 min) and excellent test precision.

Antiepileptic Drugs

Lamotrigine and Sulthiame in Plasma

Test Data

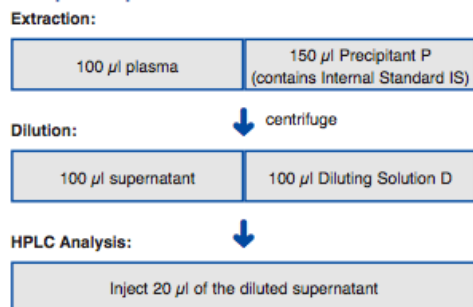
Linearity: 0.5 - 50 µg/ml
 Recovery: 95 - 105 %
 LOD: 0.2 µg/ml
 LLOQ: 0.5 µg/ml
 Intraassay precision: 2.4 %
 Interassay precision: 2.6 %

HPLC Parameters

Pump: isocratic pump,
 flow rate: 1.0 ml/min
 Injection volume: 20 µl
 Injection interval: 7 min*
 UV/VIS-Detector: 265 nm
 HPLC-Thermostat: 55 °C

* In case the sample contains carbamazepine, the run time must be extended to 15 min.

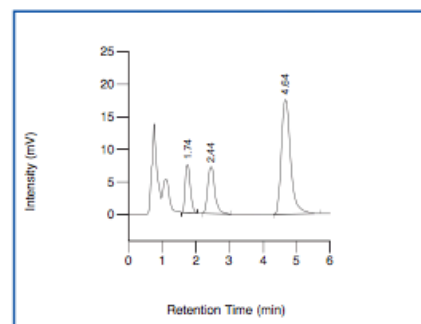
Sample Preparation



→ Injection interval: 7 min

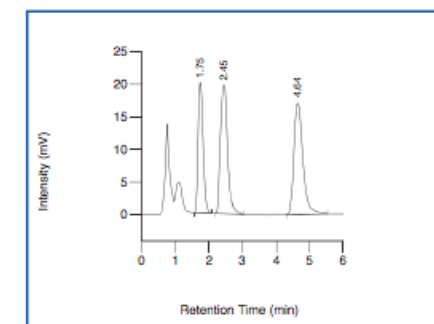
→ Excellent test precision

ClinChek® Plasma Control, Level I:



Sulthiame: 1.74 min, Lamotrigine: 2.44 min, IS: 4.64 min

ClinChek® Plasma Control, Level II:



Sulthiame: 1.75 min, Lamotrigine: 2.45 min, IS: 4.64 min

Ordering Information

Order No.	Description	Quantity
15100	ClinRep® Complete Kit for Lamotrigine, Sulthiame in Plasma for 100 assays	1 pce.
Kit Components (order no. 15100):		
15010	Mobile Phase	1000 ml
15111	Standard Solution	3 ml
15112	Precipitant P with Internal Standard	15 ml
15113	Plasma Calibrator, lyophil.	3 ml
15020	Sample Preparation Vials with Reagent, lyophil.	2 x 15020 (2 x 50 pcs.)
15021	Diluting Solution D	10 ml
	Manual	1 pce.
	Quick Reference	1 pce.
Start Accessories:		
15030	Analytical Column with test chromatogram	1 pce.
15032	Guard Column Holder incl. 1 Guard Column	1 pce.
Refill Service:		
15031	Analytical Column with test chromatogram (original column needs to be returned)	1 pce.
Accessories:		
15033	Guard Column	5 pcs.
FK5810	PEEK tubing (connection of prefilter and column)	1 pce.
FK5820	Stainless steel prefilter holder	1 pce.
FK5821	Replacement filter for stainless steel prefilter holder	10 pcs.
ClinChek® Controls:		
15180	Plasma Control, lyophil., Level I	10 x 3 ml
15181	Plasma Control, lyophil., Level II	10 x 3 ml
15182	Plasma Control, lyophil., Level I, II	2 x 5 x 3 ml