

In addition to the reliable ClinRep® Complete Kit with order no. 15000 (see pages 80 - 81), RECIPE offers a new test kit with an advanced chromatography and an extended analyte spectrum. The kit features simultaneous quantification of 16 different antiepileptics and clinically relevant metabolites, including novel drugs such as rufinamide, lacosamide and eslicarbazepine. By use of the same analytical column the kit can easily be combined with the ClinRep® Complete Kit for Levetiracetam (see pages 88 - 89).

## Antiepileptic Drugs

# Antiepileptics in Serum / Plasma, advanced

### Test Data

The test data are available on request.

### HPLC Parameters

Pump: isocratic pump,  
flow rate: 1.8 ml/min

Injection volume: 10 µl

Injection interval: 15 min (9 min\*)

UV-Detector: 205 nm

HPLC-Thermostat: 30 °C

\* In case samples do not contain carbamazepine and phenytoin, the injection interval can be reduced to 9 min.

### Sample Preparation

#### Precipitation:

|               |  |
|---------------|--|
| 100 µl sample | 200 µl Precipitant P<br>(contains Internal Standard) |
|---------------|--|

↓ centrifuge

|                    |                            |
|--------------------|----------------------------|
| 150 µl supernatant | 250 µl Diluting Solution D |
|--------------------|----------------------------|

#### HPLC Analysis:

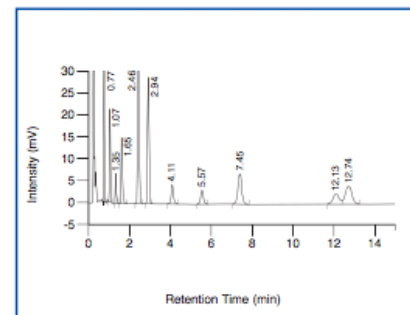
|   |
|---|
| Inject 10 µl of the diluted supernatant |
|---|

→ Advanced chromatography with 16 AEDs

→ Injection interval: 15 min (9 min)

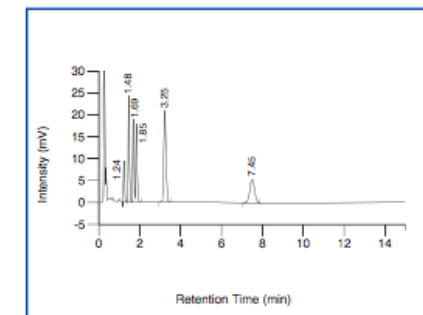
→ 1 analytical column for 16 AEDs and Levetiracetam

ClinChek® Serum Control, Level II (order no. 14081)



Ethosuximide: 0.77 min, Primidone: 1.07 min, Sulthiame: 1.35 min, Lamotrigine: 1.65 min, 10-Hydroxy-Carbamazepine: 2.46 min, Phenobarbital: 2.94 min, Carbamazepine-epoxide: 4.11 min, Oxcarbazepine: 5.57 min, IS: 7.45 min, Carbamazepine: 12.13 min, Phenytoin: 12.74 min

ClinChek® Serum Control, Level II (order no. 14181)



Lacosamide: 1.24 min, Zonisamide: 1.48 min, Felbamate: 1.69 min, Rufinamide: 1.85 min, N-Desmethylnethosuximide: 3.25 min, IS: 7.45 min

### Ordering Information

| Order No.                                | Description  | Quantity     |
|--|--|--------------|
| 14000                                    | ClinRep® Complete Kit, advanced, for Antiepileptics in Serum / Plasma for 100 assays | 1 pce.       |
| <b>Kit Components (order no. 14000):</b> |  |              |
| 14010                                    | Mobile Phase   | 1000 ml      |
| 14011                                    | Standard Solution Antiepileptics 3   | 3 ml         |
| 14012                                    | Precipitant P with Internal Standard   | 20 ml        |
| 14013                                    | Serum Calibrator Antiepileptics 3, lyophil.  | 3 ml         |
| 14020                                    | Sample Preparation Vials   | 100 pcs.     |
| 14021                                    | Diluting Solution D  | 25 ml        |
|  | Manual   | 1 pce.       |
|  | Quick Reference  | 1 pce.       |
| <b>Optional Components:</b>              |  |              |
| 14111                                    | Standard Solution Antiepileptics 4   | 3 ml         |
| 15111                                    | Standard Solution for Lamotrigine and Sulthiame                                      | 3 ml         |
| 14113                                    | Serum Calibrator Antiepileptics 4, lyophil.  | 3 ml         |
| 15113                                    | Plasma Calibrator for Lamotrigine and Sulthiame, lyophil.                            | 3 ml         |
| <b>Start Accessories:</b>                |  |              |
| 14030                                    | Analytical Column with test chromatogram   | 1 pce.       |
| <b>Accessories:</b>                      |  |              |
| FK5810                                   | PEEK tubing (connection of prefilter and column)                                     | 1 pce.       |
| FK5820                                   | Stainless steel prefilter holder   | 1 pce.       |
| FK5821                                   | Replacement filter for stainless steel prefilter holder                              | 10 pcs.      |
| <b>ClinChek® Controls:</b>               |  |              |
| 14080                                    | Serum Control Antiepileptics 3, lyophil., Level I                                    | 10 x 3 ml    |
| 14081                                    | Serum Control Antiepileptics 3, lyophil., Level II                                   | 10 x 3 ml    |
| 14082                                    | Serum Control Antiepileptics 3, lyophil., Level I, II                                | 2 x 5 x 3 ml |
| 14180                                    | Serum Control Antiepileptics 4, lyophil., Level I                                    | 10 x 3 ml    |
| 14181                                    | Serum Control Antiepileptics 4, lyophil., Level II                                   | 10 x 3 ml    |
| 14182                                    | Serum Control Antiepileptics 4, lyophil., Level I, II                                | 2 x 5 x 3 ml |
| 15180                                    | Plasma Control for Lamotrigine and Sulthiame, lyophil., Level I                      | 10 x 3 ml    |
| 15181                                    | Plasma Control for Lamotrigine and Sulthiame, lyophil., Level II                     | 10 x 3 ml    |
| 15182                                    | Plasma Control for Lamotrigine and Sulthiame, lyophil., Level I, II                  | 2 x 5 x 3 ml |