

# +RECIPE

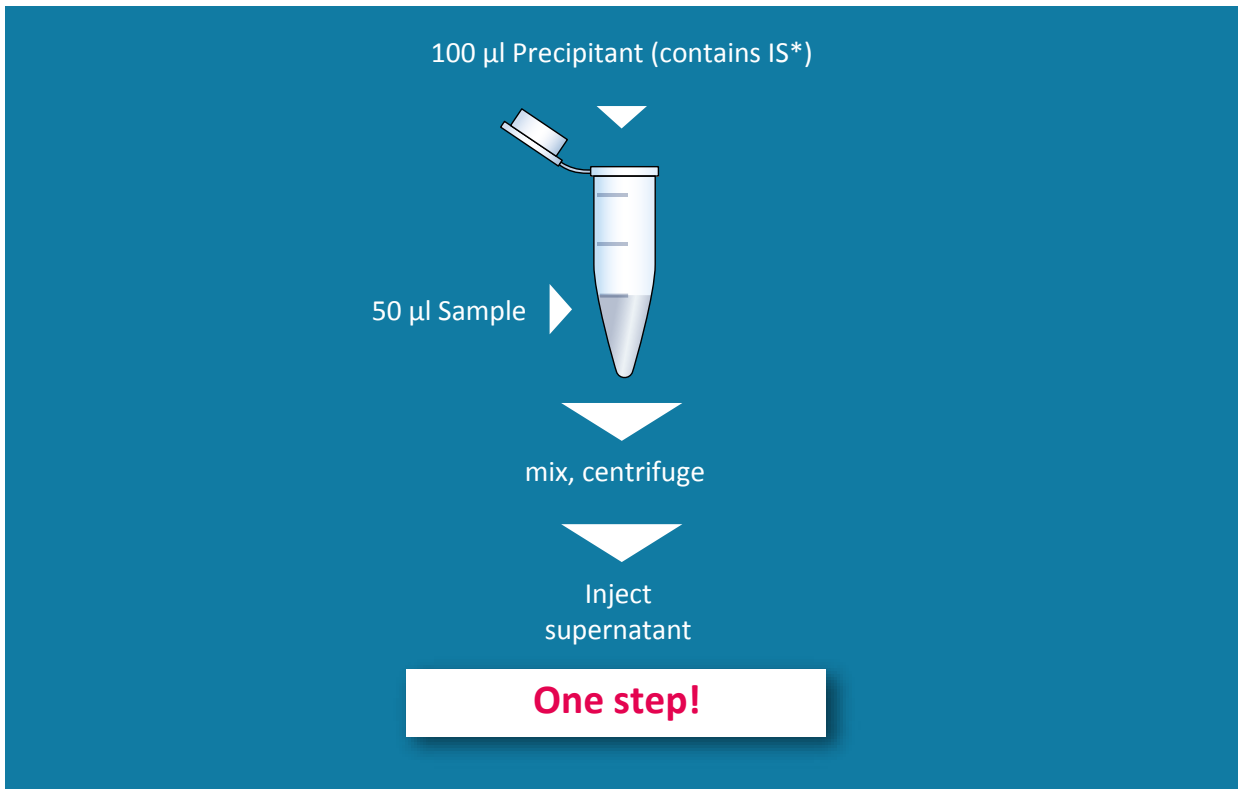
## TDM 200 Kit System



also available:  
**TDM<sup>i</sup>**

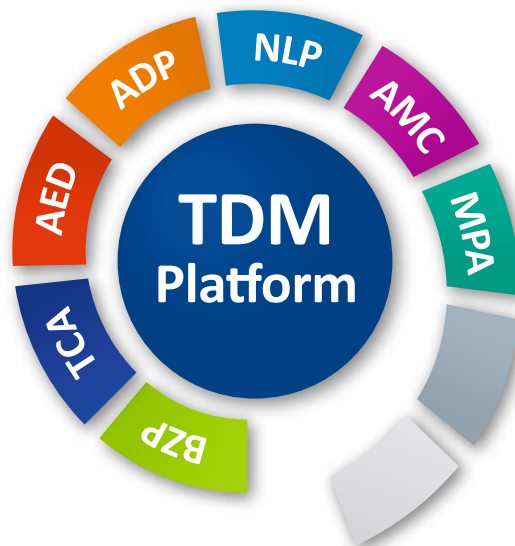
Therapeutic Drug Monitoring (TDM)  
by LC-MS/MS

# The RECIPE TDM 200 Kit System



The **TDM 200 Kit System** offers you the possibility to determine more than 155 different analytical parameters with **one** Kit System (sample preparation, mobile phases and analytical column).

## 155 analytical parameters in 7 Add-on Sets



\* Internal Standards available for most analytes.

# The RECIPE TDM<sup>i</sup> Kit Solution



The **TDM 200 Kit System** is also available as **TDM<sup>i</sup> Kit Solution** with direct injection of matrix.

## Direct Injection Technology

Internal Standard is added to native serum or plasma sample, calibrator or control automatically by just one simple pipetting step of the autosampler followed by direct injection of the individual samples into the chromatographic system. Subsequently, the analytes are separated and determined by on-line analysis.

## Simplify your lab-routine

- + By direct injection of matrix
- + Retention times < 7 min.
- + Small sample volume needed < 20  $\mu$ l

**ADP****37 Antidepressants****Order no. MS9400**

Agomelatine	Fluoxetine	Paroxetine
Atomoxetine	Fluvoxamine	Reboxetine
Bupropion	Guanfacine	Ritalinic Acid
Citalopram	Hydroxybupropion	Sertraline
Clomethiazole	Methylphenidate	threo-Dihydro-Bupropion
Desmethylcitalopram	Mianserine	Tianeptine
Desmethylfluoxetine	Milnacipran	Tramadol
Desmethylmianserine	Mirtazapine	Tranlycypromine
Desmethylmirtazapine	Moclobemide	Trazodone
Desmethylsertraline	Nefazodone	Venlafaxine
Dosulepin	O-Desmethyltramadol	Vortioxetine
Duloxetine	O-Desmethylvenlafaxine	
erythro-Dihydro-Bupropion	Opipramol	

**AED****26 Antiepileptic Drugs****Order no. MS9200**

10-OH-Carbamazepine	Levetiracetam	Retigabine
Carbamazepine	N-Desmethylnmethsuximide	Rufinamide
Carbamazepine-diol	Oxcarbazepine	Stiripentol
Carbamazepine-epoxide	PEMA	Sulthiame
Ethosuximide	Perampanel	Tiagabine
Felbamate	Phenobarbital	Topiramate
Gabapentine	Phenytoin	Valproic Acid
Lacosamide	Pregabalin	Zonisamide
Lamotrigine	Primidone	

**AMC****11 Antimycotics****Order no. MS9600**

5-Fluorocytosine	Isavuconazole	OH-Itraconazole
Amphotericin B	Itraconazole	Posaconazole
Anidulafungin	Ketoconazole	Voriconazole
Fluconazole	Micafungin	

## 36 Benzodiazepines

Order no. MS9500

BZP

3-Hydroxybromazepam	Demoxepam	Nordiazepam
7-Aminoclonazepam	Desalkylflurazepam	Oxazepam
7-Aminoflunitrazepam	Desmethylflunitrazepam	Prazepam
7-Aminonitrazepam	Diazepam	Temazepam
$\alpha$ -Hydroxyalprazolam	Estazolam	Tetrazepam
$\alpha$ -Hydroxymidazolam	Flunitrazepam	Trazodone
$\alpha$ -Hydroxytriazolam	Flurazepam	Triazolam
Alprazolam	Lorazepam	Zaleplon
Bromazepam	Lormetazepam	Zolpidem
Brotizolam	Medazepam	Zopiclone
Chlordiazepoxide	Midazolam	
Clobazam	Nitrazepam	
Clonazepam	Norclobazam	

## 2 Mycophenolic Acid

Order no. MS99100

MPA

Mycophenolic acid	Mycophenolic acid glucuronide
-------------------	-------------------------------

## 28 Neuroleptics

Order no. MS9300

NLP

Amisulpride	Melperone	Sertindole
Aripiprazole	Norclozapine	Sulpiride
Chlorpromazine	Norquetiapine	Thioridazine
Chlorprothixene	Olanzapine	Ziprasidone
Clozapine	Paliperidone (9-OH-Risperidone)	Zotepine
Dehydro-Aripiprazole	Perazine	Zuclophenthixol
Desmethylolanzapine	Pipamperone	
Flupentixol	Promethazine	
Fluphenazine	Prothipendyl	
Haloperidol	Quetiapine	
Levomepromazine	Risperidone	

## 15 Tricyclic Antidepressants

Order no. MS9100

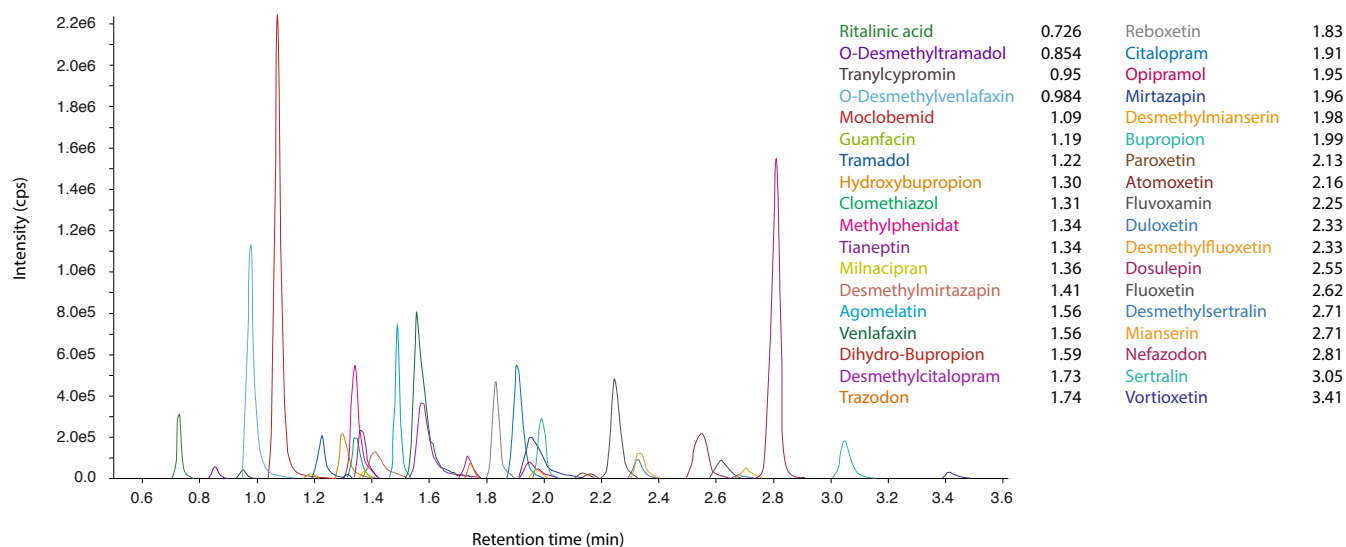
TCA

Amitriptyline	Imipramine	Normaprotiline
Clomipramine	Maprotiline	Nortrimipramine
Clozapine	Norclomipramine	Nortriptyline
Desipramine	Norclozapine	Protriptyline
Doxepin	Nordoxepin	Trimipramine

ADP

TDM

Antidepressants

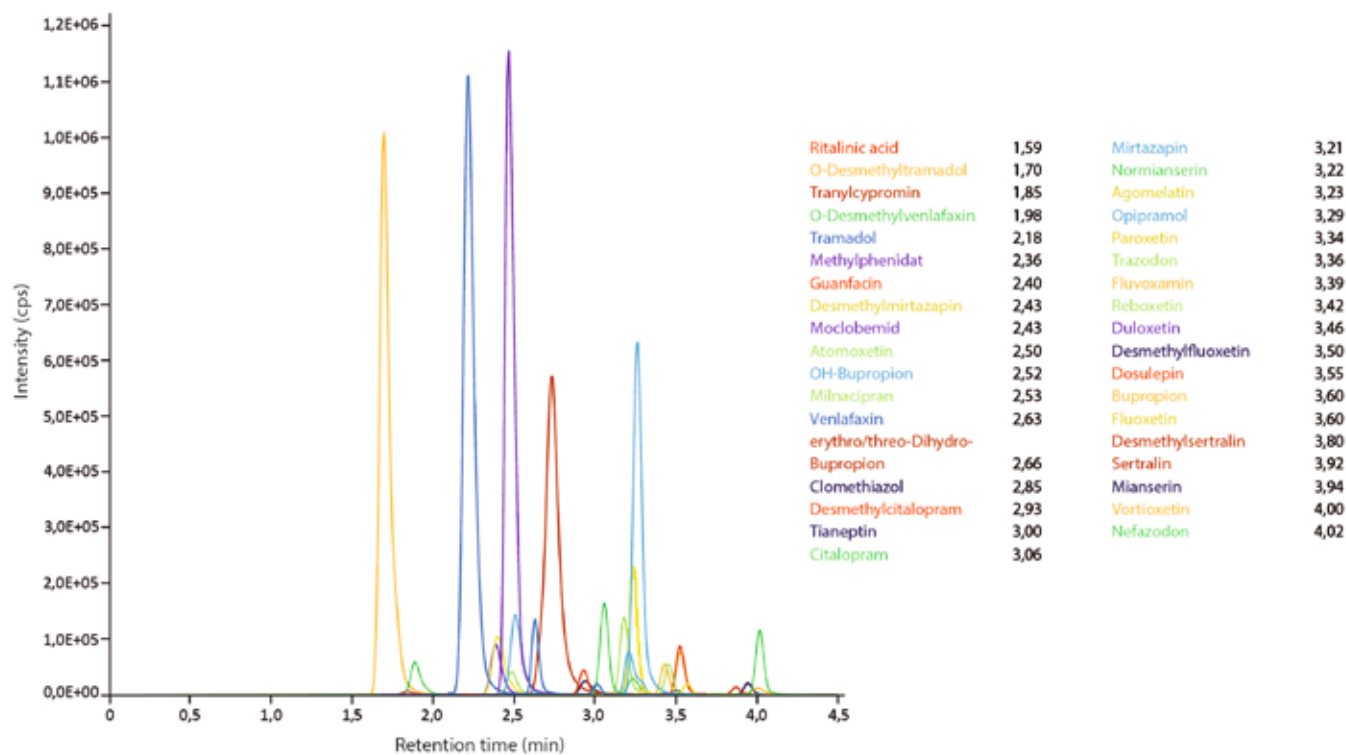


ADP

TDM<sup>i</sup>

Antidepressants

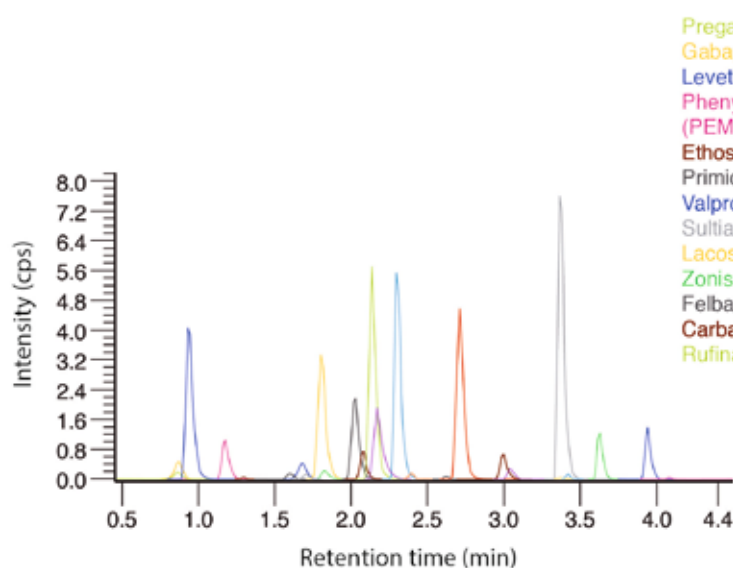
## Direct Injection



TDM

Antiepileptic Drugs

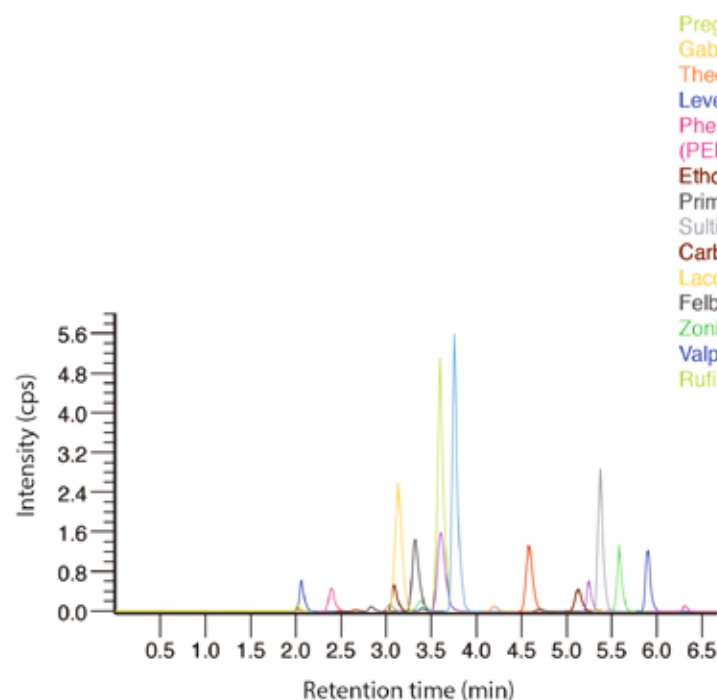
AED

TDM<sup>i</sup>

Antiepileptic Drugs

AED

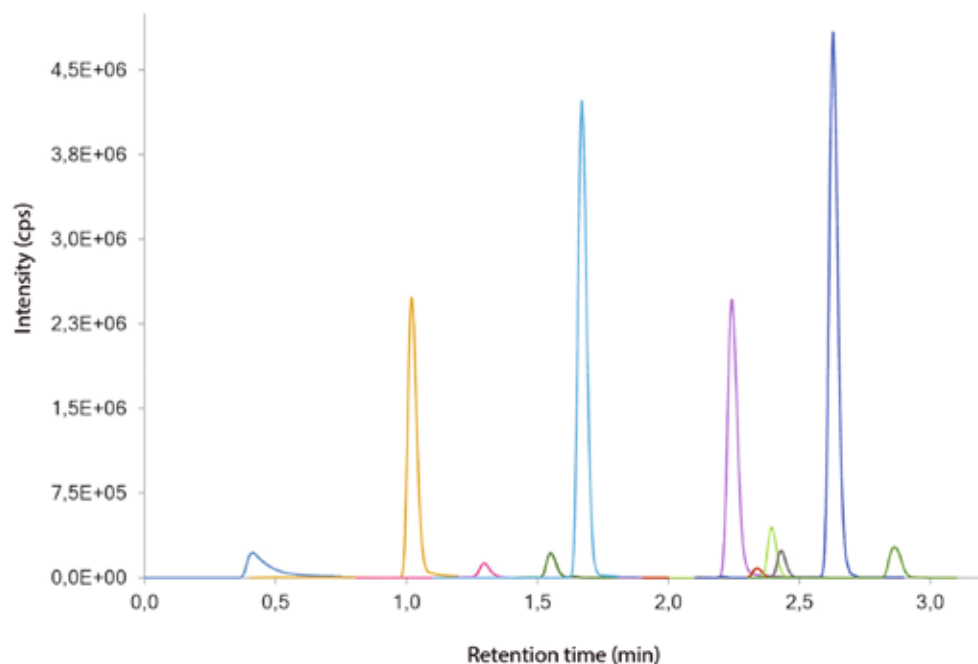
## Direct Injection



AMC

TDM

Antimycotics



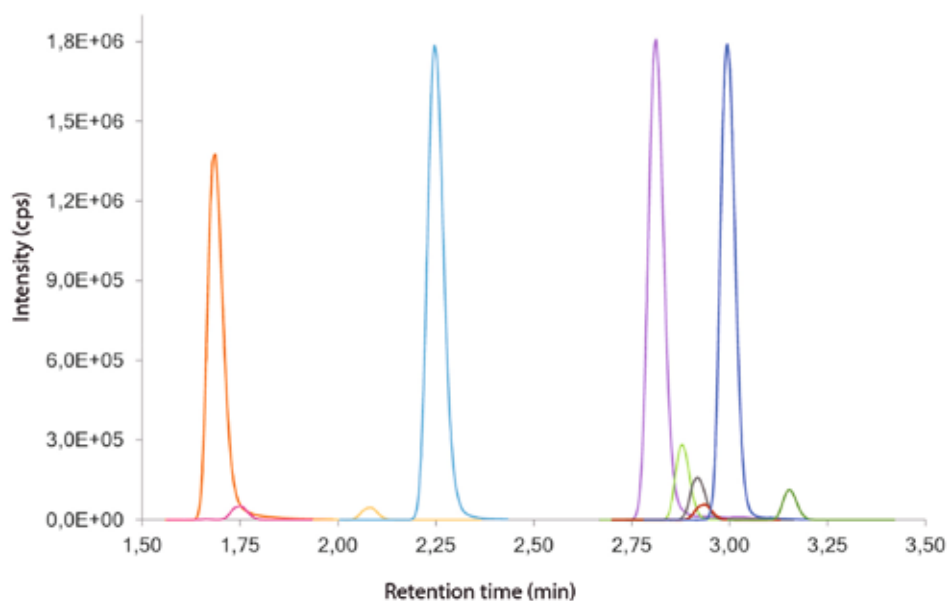
5-Fluorocytosine	0.41
Fluconazole	1.02
Amphotericin B	1.30
Micafungin	1.55
Voriconazole	1.67
Ketoconazole	2.24
Anidulafungin	2.34
Posaconazole	2.39
Hydroxy-Itraconazole	2.43
Isavuconazole	2.63
Itraconazole	2.86

AMC

TDM<sup>i</sup>

Antimycotics

### Direct Injection



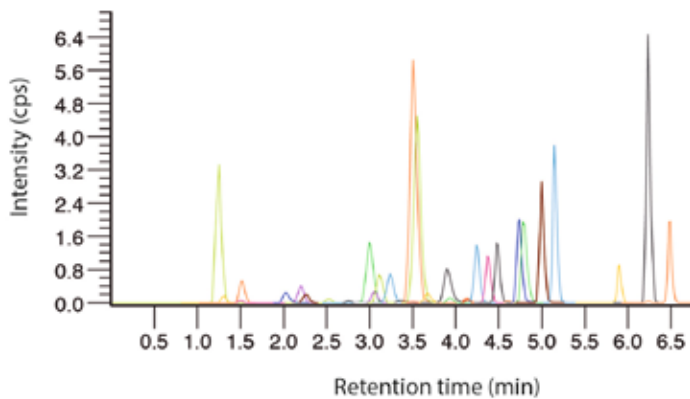
Fluconazole	1.69
Amphotericin B	1.74
Micafungin	2.09
Voriconazole	2.25
Ketoconazole	2.81
Posaconazole	2.88
Hydroxy-Itraconazole	2.92
Anidulafungin	2.94
Isavuconazole	2.99
Itraconazole	3.15



TDM

Benzodiazepines

BZP



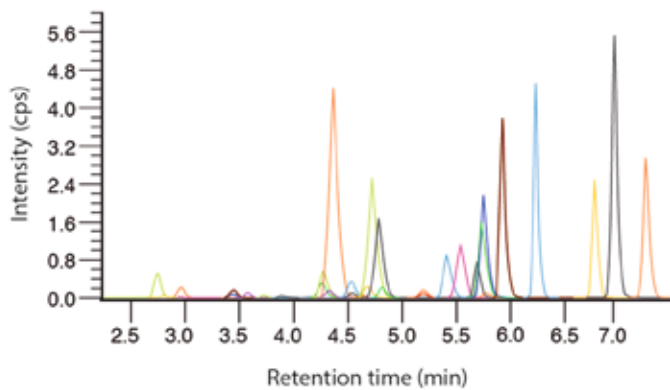
7-Aminonitrazepam	1.24	Chlordiazepoxide	3.55
7-Aminoclonazepam	1.30	Alprazolam	3.67
3-Hydroxybromazepam	1.50	$\alpha$ -OH-Midazolam	3.90
7-Aminoflunitrazepam	1.51	Triazolam	3.93
Bromazepam	2.02	Desalkylflurazepam	4.12
Demoxepam	2.19	Flunitrazepam	4.13
Zopiclon	2.26	Temazepam	4.24
Zaleplon	2.52	Brotizolam	4.35
$\alpha$ -OH-Triazolam	2.74	Nordiazepam	4.37
$\alpha$ -OH-Alprazolam	2.75	Clobazam	4.48
Desmethylflunitrazepam	2.89	Lormetazepam	4.61
Oxazepam	3.00	Trazodone	4.73
Nitrazepam	3.06	Flurazepam	4.79
Estazolam	3.11	Midazolam	4.99
Norclobazam	3.23	Diazepam	5.14
Lorazepam	3.37	Tetrazepam	5.90
Clonazepam	3.44	Prazepam	6.23
Zolpidem	3.50	Medazepam	6.48

TDM<sup>i</sup>

Benzodiazepines

BZP

Direct Injection

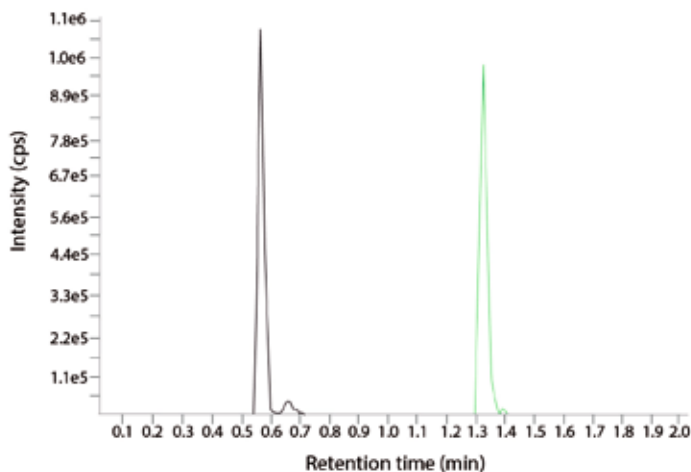


7-Aminonitrazepam	2.74	Alprazolam	4.67
7-Aminoclonazepam	2.80	Chlordiazepoxide	4.72
3-Hydroxybromazepam	2.96	$\alpha$ -OH-Midazolam	4.78
7-Aminoflunitrazepam	2.96	Triazolam	4.81
Bromazepam	3.43	Desalkylflurazepam	5.19
Zopiclon	3.45	Flunitrazepam	5.19
Demoxepam	3.57	Brotizolam	5.21
Zaleplon	3.71	Temazepam	5.40
$\alpha$ -OH-Triazolam	3.86	Nordiazepam	5.54
$\alpha$ -OH-Alprazolam	3.88	Clobazam	5.68
Desmethylflunitrazepam	4.15	Flurazepam	5.73
Oxazepam	4.26	Trazodone	5.74
Estazolam	4.27	Lormetazepam	5.77
Nitrazepam	4.33	Midazolam	5.92
Zolpidem	4.36	Diazepam	6.23
Norclobazam	4.53	Tetrazepam	6.77
Lorazepam	4.53	Prazepam	6.95
Clonazepam	4.60	Medazepam	7.25

TDM

Mycophenolic Acid

MPA

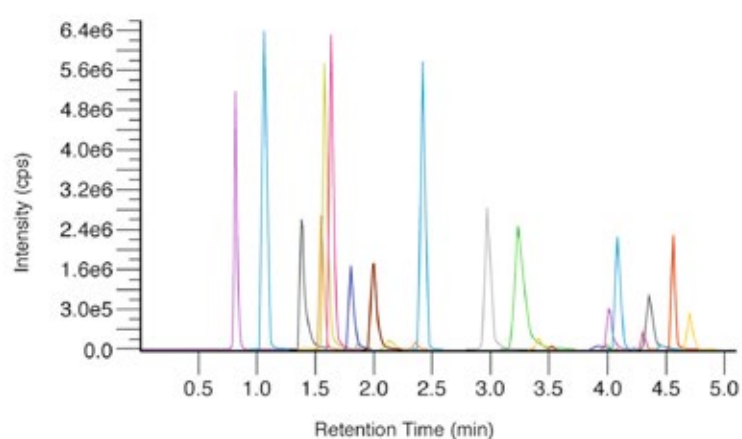


Mycophenolic acid glucuronide (MPAG)	0.56
Mycophenolic acid	1.32

NLP

TDM

Neuroleptics

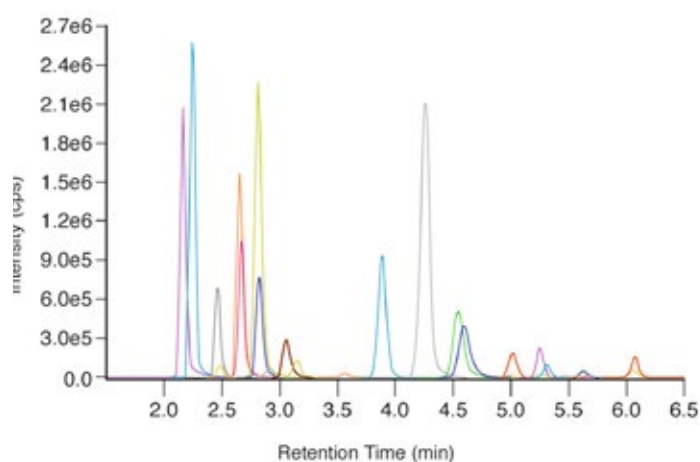


NLP

TDM<sup>i</sup>

Neuroleptics

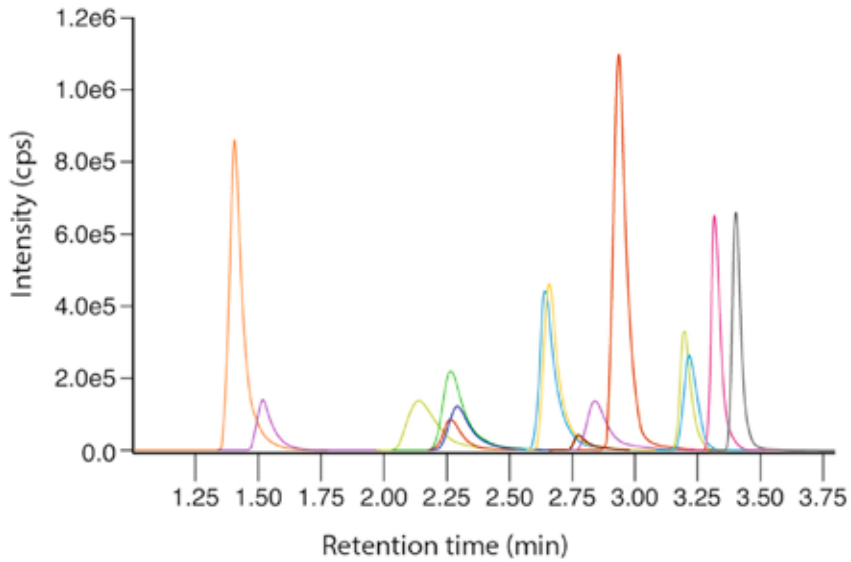
## Direct Injection



TDM

Tricyclic Antidepressants

TCA



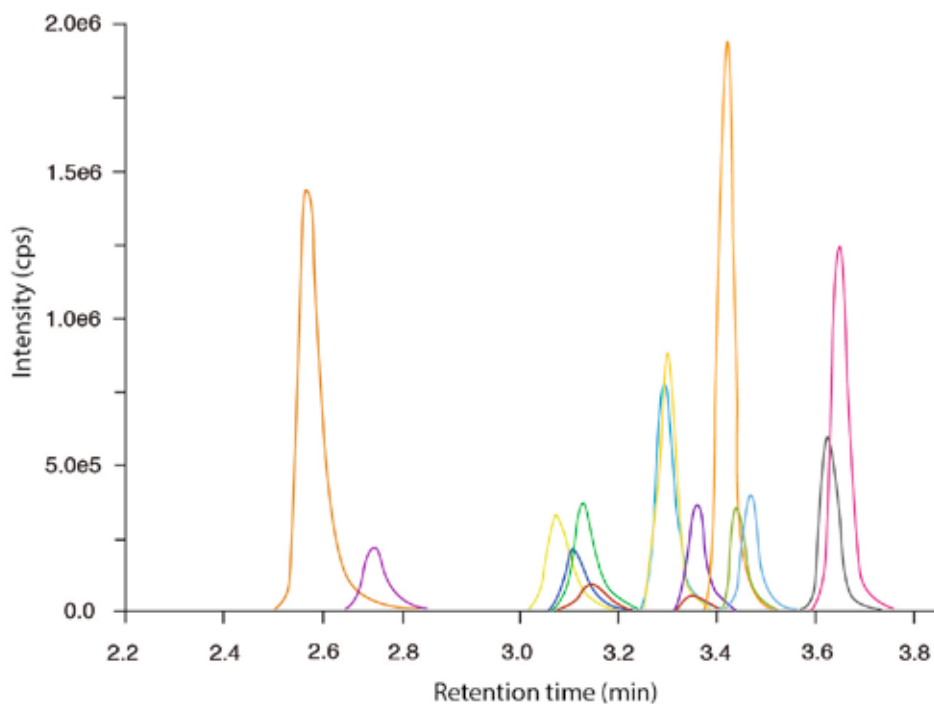
Norclozapine	1.40
Nordoxepin	1.52
Doxepin	2.14
Desipramine	2.27
Normaprotiline	2.27
Protriptyline	2.29
Nortriptyline	2.65
Maprotiline	2.66
Nortrimipramine	2.78
Imipramine	2.84
Clozapine	2.94
Norclomipramine	3.20
Amitriptyline	3.22
Trimipramine	3.32
Clomipramine	3.40

TDM<sup>i</sup>

Tricyclic Antidepressants

TCA

## Direct Injection



Norclozapine	2.57
Nordoxepin	2.70
Doxepin	3.07
Protriptyline	3.11
Desipramine	3.13
Normaprotiline	3.15
Nortriptyline	3.29
Maprotiline	3.30
Nortrimipramine	3.35
Imipramine	3.36
Clozapine	3.42
Norclomipramine	3.44
Amitriptyline	3.47
Clomipramine	3.62
Trimipramine	3.65

## Your choice in HPLC & LC-MS/MS diagnostics

- + Certified and quality approved CE-IVD methods
- + Unique RECIPE TDM 200 Kit System
- + Preferred partner in more than 80 countries

**+RECIPE**

**RECIPE Chemicals +  
Instruments GmbH**

Dessauerstraße 3  
80992 München

Tel. +49 89 54 70 81 - 0

Fax. +49 89 54 70 81 - 11

[info@recipe.de](mailto:info@recipe.de)

[www.recipe.de](http://www.recipe.de)