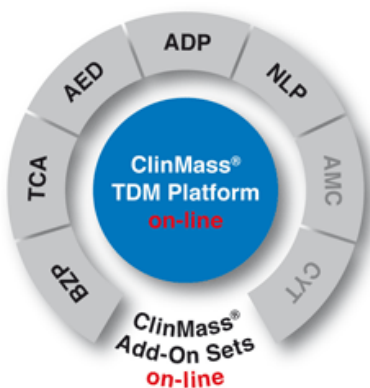


# ClinMass® TDM Kit System, on-line Neuroleptics in Serum / Plasma (MS9350)

## TDM Kit System, on-line



The ClinMass® "TDM Kit System, on-line" is based on a universal TDM Platform for the on-line SPE LC-MS/MS analysis. It can be used for a variety of TDM analytes.

Select your analyte panel by choosing the suitable ClinMass® Add-on Sets. Currently available are:

- Add-on Set for 28 Neuroleptics (NLP, MS9350)
- Add-on Set for 35 Benzodiazepines (BZP, MS9550)
- Add-on Set for 15 Tricyclic Antidepressants (TCA, MS9150)
- Add-on Set for 27 Antiepileptic Drugs (AED, MS9250)
- Add-on Set for 27 Antidepressants (ADP, MS9450)

### *In preparation:*

- Add-on Sets for Antimycotics (AMC) and Cytostatics (CYT)

### *The benefits:*

The whole analyte panel is determined on one TDM Platform (i.e. identical mobile phases) and on one analytical column.

## Neuroleptics in Serum / Plasma

Neuroleptics belong to the class of psychoactive drugs and are administered in the therapy of psychoses, in particular the symptomatic treatment of schizophrenia. The longterm administration of neuroleptics gradually reduces schizophrenic reactions and as a consequence the patient's level of suffering is decreased. For treatment with neuroleptics therapeutic drug monitoring (TDM) is recommended in order to find the optimal drug level for the patient and thus to ensure the best psychoactive drug therapy for the patient with the lowest possible amount of side effects.

The ClinMass® Add-On Set, for Neuroleptics, on-line, (MS9350) contains the analyte-specific components for the determination of 28 different neuroleptics. The analysis is performed by HPLC with tandem mass spectrometry (LC-MS/MS).

The ClinMass® TDM-Platform (MS9050) contains the basic compounds required for LC-MS/MS analysis. It can be used with all ClinMass® Add-On Sets of the TDM Kit System. For all TDM analytes just one analytical column is required.

**Direct injection of serum and plasma**

**Flexible and fast on-line SPE Analysis  
(6.6 min)**

**Comprehensive analyte spectrum**

**IS contains 25 isotope labelled  
analytes**

## Sample Preparation

No manual sample preparation needed;

Direct injection of sample and Internal Standard IS in the ratio 1:2 (autosampler)

## LC-MS/MS Parameters

### LC-Parameters

Binary HPLC pump: Mobile Phases A / B  
(0.65 ml/min)

Binary HPLC pump: SPE-Buffer L / W  
(0.1 - 4 ml/min)

Injektion volume: 3 - 15 µl

Injektion interval: 6.6 min

Column heater: 40 °C

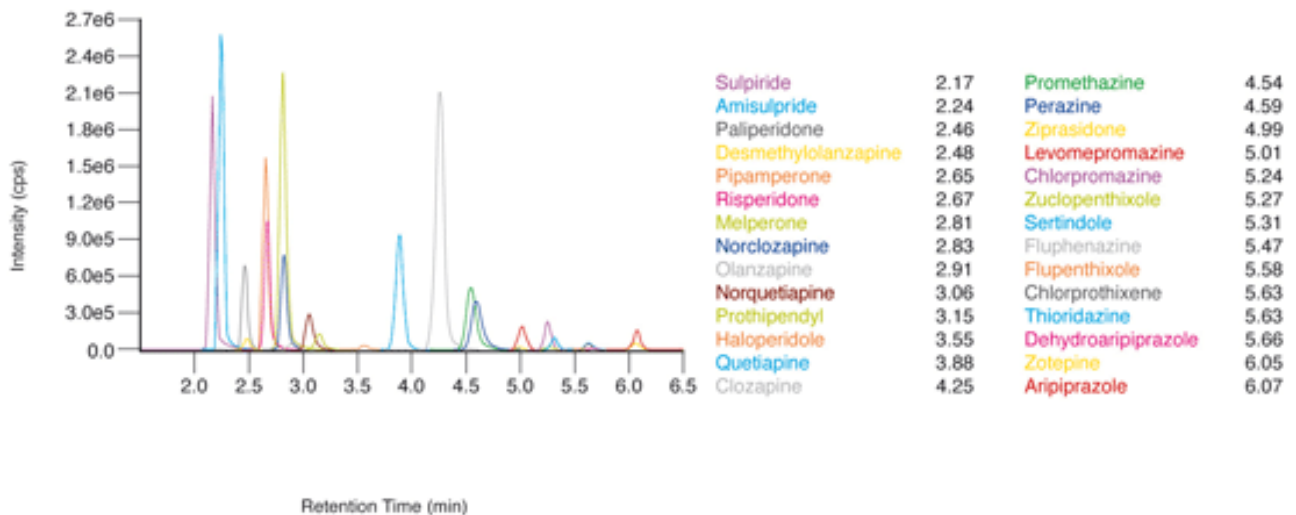
### MS-Parameters

Ion source: ESI

MS/MS-mode: MRM

## Chromatogram

Chromatogram of the ClinCal® Serum Calibrator (order no. MS9313), level 2:



## Ordering Information

Order No.	Description	Quantity
<b>MS9050</b>	ClinMass® TDM Platform, on-line for 400 assays	1 pce.
<b>Contents (order no. MS9050):</b>		
<b>MS9005</b>	Autosampler Washing Solution	1000 ml
<b>MS9007</b>	Mobile Phase A	2 x MS9007 (2x 1000 ml)
<b>MS9008</b>	Mobile Phase B	1000 ml
<b>MS9059</b>	SPE-Buffer Load L	2500 ml
<b>MS9060</b>	SPE-Buffer Wash W	2500 ml
<b>MS9071</b>	Reconstitution Solution R	5 ml
<b>Start Accessories:</b>		
<b>MS9035</b>	Analytical Column with test chromatogram	1 pce.
<b>MS9031</b>	SPE-Column	1 pce.
<b>MS9032</b>	Prefilter	1 pce.
<b>Accessories:</b>		
<b>MS9022</b>	Diluting Solution D	50 ml
<b>FK7400</b>	Inline-Filter (stainless steel sieve, free of dead volume)	1 pce.
<b>FK7340</b>	Sealings and sieves for order no. FK7400	4 pcs. each
Order No.	Description	Quantity
<b>MS9350</b>	ClinMass® Add-on Set, on-line, for Neuroleptics in Serum / Plasma for 400 assays	1 pce.
<b>Contents (order no. MS9350):</b>		
<b>MS9362</b>	IS Interner Standard, lyophil.	5 ml
<b>MS9313</b>	Serum Calibrator Set, lyophil. (Level 0 - 3) Manual	4 x 1 x 1 ml
<b>Start Accessories:</b>		
<b>MS9314</b>	Optimisation Mix, lyophil.	2 x 2 ml
<b>ClinChek® Controls:</b>		
<b>MS9382</b>	Serum Control, lyophil., Level I, II	2 x 5 x 1 ml